

The #1 Agent in the area bringing London & out of area buyers to your door



Beautifully presented three bedroom cottage in the heart of Ketton.

- Stone Cottage
- Well Presented
- Three Reception Rooms
- Breakfast Kitchen
- Three Bedrooms
- Private Garden
- Off Road Parking
- Garage
- Sought After Village Location

## Redmiles Lane, Ketton, PE9 3RG

Experience the perfect blend of charm and modern convenience at this beautifully presented home in the heart of Ketton. This property offers a harmonious balance of spacious living areas, well-appointed bedrooms, and delightful outdoor spaces.

As you step inside, you are greeted with the welcoming dining room, basking in natural light with ample space for relaxation and entertainment. The dining room provides an elegant space for formal meals and family gatherings. Just off the hallway is two further reception rooms, firstly the cosy living room with fireplace and to the rear, the modern garden room with bi-fold doors overlooking the garden with views of the church. The kitchen, complete with ample cupboard space and a breakfast area, is perfect for morning coffee and casual dining. A practical utility room and a full bathroom complement the ground floor layout, ensuring convenience and functionality.

Upstairs, the residence boasts two well-proportioned bedrooms, both with built-in wardrobes. The master bedroom is especially spacious, featuring room for a super king-sized bed and additional furniture. A study area provides a quiet corner for work or potential to create a third bedroom. A contemporary shower room completes the first-floor amenities, with sleek fixtures and walk-in shower.

The property is equally impressive outside, with a sizeable garden that invites alfresco dining and leisure. The garden itself is a canvas for those with a green thumb, offering both privacy and potential with the most stunning views of the village church. Additionally, a garage provides secure parking and extra storage.

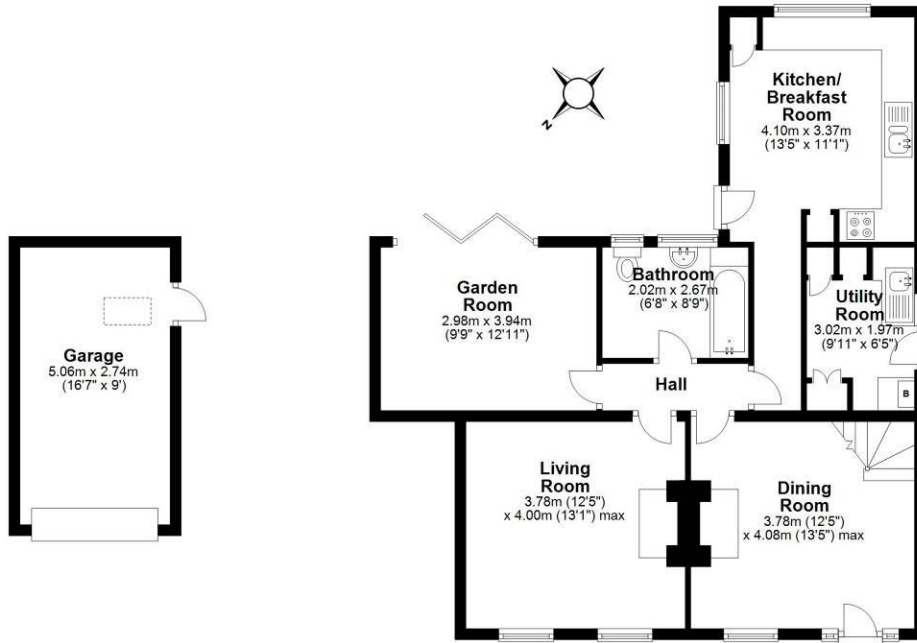
Ketton is just a few minutes' drive from the sought-after Georgian market town of Stamford, boasting the famous The George Hotel and further amenities. Stamford railway station provides services to Peterborough, with trains to London Kings Cross in approximately 1 hour as well as the A1 being just three miles from the village.



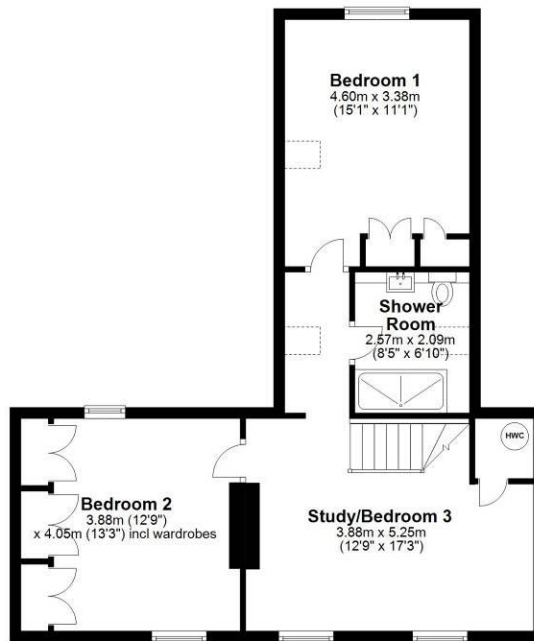


For more information, please contact a member of the team. For enquiries outside of normal office hours: [outofhours@moorestateagents.com](mailto:outofhours@moorestateagents.com)

**Ground Floor**  
Approx. 88.8 sq. metres (956.3 sq. feet)



**First Floor**  
Approx. 61.0 sq. metres (656.9 sq. feet)



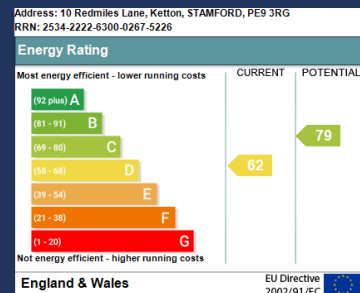
Total area: approx. 149.9 sq. metres (1613.2 sq. feet)

This floor plan is not to scale. They are for guidance only and accuracy is not guaranteed. Plan was produced by ADR Energy Assessors  
Plan produced using PlanUp.

**moores**  
ESTATE AGENTS.COM

Moores Property Hub 01572 757979 | Uppingham 01572 821935 | Stamford 01780 484555 | Melton 01664 491610  
Peterborough Meet & Greet 01733 788888 | Grantham Meet & Greet 01476 855618 | A1 Meet & Greet Stoke Rochford  
office@mooresestateagents.com | www.mooresestateagents.com

Moore V Ltd trading as Moores Estate Agents gives notice that: 1. These particulars do not constitute an offer or contract or part thereof. 2. All descriptions, photographs and plans are for guidance only and should not be relied upon as statements or representations of fact. All measurements are approximate and not necessarily to scale. Any prospective purchaser must satisfy themselves of the correctness of the information within the particulars by inspection or otherwise. 3. Moore V Ltd trading as Moores Estate Agents does not have any authority to give any representations or warranties whatsoever in relation to this property (including but not limited to planning/building regulations), nor can it enter into any contract on behalf of the Vendor. 4. Moore V Ltd trading as Moores Estate Agents does not accept responsibility for any expenses incurred by prospective purchasers in inspecting properties which have been sold, let or withdrawn. 5. If there is anything of particular importance to you, please contact this office and we will try to have the information checked for you.



Follow us on... Facebook Twitter Instagram

For more information, please contact a member of the team. For enquiries outside of normal office hours: outofhours@mooresestateagents.com

www.mooresestateagents.com | office@mooresestateagents.com

OnTheMarket.com rightmove